



## 1 Bedroom Center Apartment

**The Blade**

# £292,652

**Ref: UK.TBM.1BCE**

Subtle design and elegant finishes merge to create premium living spaces. Luxurious and distinctive 1-bedroom apartments at The Blade in Manchester. Impressive communal facilities and immediate access to expansive green space also provide the amenities and outdoor space tenants are demanding more than ever. Multiple choices available in a choice of floors with prices starting at £260,098 Facilities and Amenities:• Contemporary, state-of-the-art gymnasium with separate studio for fitness classes• Residents-only sauna/steam room• Premium live/work lounge• Rooftop terrace located on the podium level, designed to capture afternoon sunshine• Residents lounge, opening out onto the terrace• Picturesque community park on the ground level of the building• Podium-level retail space• Primary school...

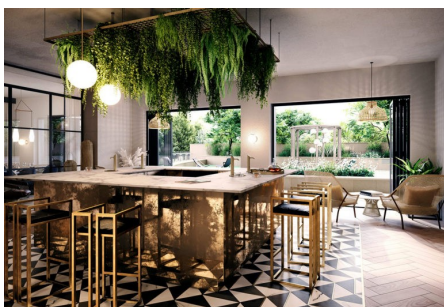
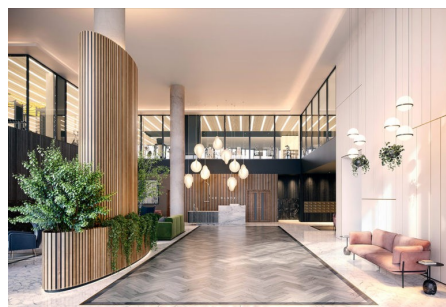
Telephone: +44 (0) 330 053 6919

Email: [newhomes@remax.uk](mailto:newhomes@remax.uk)

RE/MAX New Homes Deansgate 62-70 Tettenhall Road Wolverhampton WV1 4TH

**RE/MAX**  
England & Wales  
*OVERSEAS*

# Gallery



Telephone: +44 (0) 330 053 6919

Email: [newhomes@remax.uk](mailto:newhomes@remax.uk)

RE/MAX New Homes Deansgate 62-70 Tettenhall Road Wolverhampton WV1  
4TH

**RE/MAX**  
England & Wales  
*OVERSEAS*

# Property Description

**Location:** Global

Subtle design and elegant finishes merge to create premium living spaces.

Luxurious and distinctive 1-bedroom apartments at The Blade in Manchester. Impressive communal facilities and immediate access to expansive green space also provide the amenities and outdoor space tenants are demanding more than ever.

Multiple choices available in a choice of floors with prices starting at £260,098

**Facilities and Amenities:**

- Contemporary, state-of-the-art gymnasium with separate studio for fitness classes
- Residents-only sauna/steam room
- Premium live/work lounge
- Rooftop terrace located on the podium level, designed to capture afternoon sunshine
- Residents lounge, opening out onto the terrace
- Picturesque community park on the ground level of the building
- Podium-level retail space
- Primary school located adjacent to the tower

Manchester is the UK's leading regional hub – with average annual economic growth outpacing national and European Union averages. A city with a first-class infrastructure, home to some of the UK's biggest companies and the world's largest multinationals. A city with big plans for the future.

It's also a city with one of the most in-demand – and undersupplied – property markets in the UK. Manchester property investment opportunities are increasingly attractive for global investors.

With projections forecasting Manchester and the North West to drive UK price growth in the next five years and beyond, everything is in place for the city to remain one of the strongest places to buy property in the UK and Europe.

An icon at the heart of Manchester's skyscraper district—and an unmissable opportunity to invest in the UK's strongest property investment city.

---

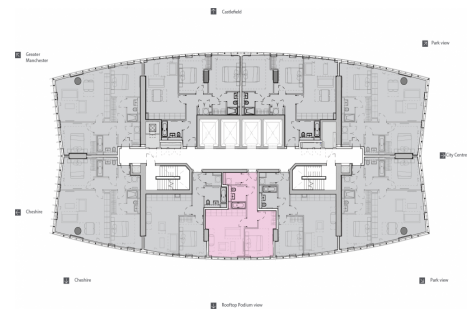
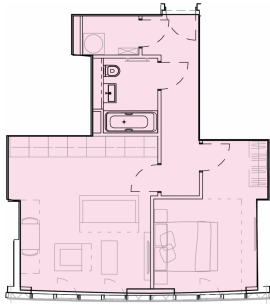
Telephone: +44 (0) 330 053 6919

Email: [newhomes@remax.uk](mailto:newhomes@remax.uk)

RE/MAX New Homes Deansgate 62-70 Tettenhall Road Wolverhampton WV1  
4TH

**RE/MAX**  
England & Wales  
*OVERSEAS*

# FloorPlans



Telephone: +44 (0) 330 053 6919

Email: [newhomes@remax.uk](mailto:newhomes@remax.uk)

RE/MAX New Homes Deansgate 62-70 Tettenhall Road Wolverhampton WV1  
4TH

**RE/MAX**  
England & Wales  
*OVERSEAS*