



Studio Apartment

Cliff Pavilions, Harwich, Harwich

£102,995

Ref: uk.clif.2-025

For investors, the studio and one-bedroom Apartments offer an investment opportunity rarely available. These units have the benefit of being fully managed and maintained and will be marketed and promoted to deliver a rental yield for the owner well above normal levels of return. Due to the enviable location of the development, it is envisaged that there will be sizeable capital growth on the value of Apartments once completed and combined with the rental income this investment presents a significant return on investment. • Modern Studio Apartment• Furnished Option for Investors• Kitchenette• Walk-in Showers• Partial Sea or Garden Views• WiFi Throughout• Private Courtyard Parking• Video Entry System

Telephone: +44 (0) 330 053 6919

Email: newhomes@remax.uk

RE/MAX New Homes Deansgate 62-70 Tettenhall Road Wolverhampton WV1 4TH

RE/MAX
England & Wales
OVERSEAS

Gallery



Telephone: +44 (0) 330 053 6919

Email: newhomes@remax.uk

RE/MAX New Homes Deansgate 62-70 Tettenhall Road Wolverhampton WV1
4TH

RE/MAX
England & Wales
OVERSEAS

Property Description

Location: 22 Marine Parade, Dovercourt Bay, Harwich, Harwich, Essex

For investors, the studio and one-bedroom Apartments offer an investment opportunity rarely available.

These units have the benefit of being fully managed and maintained and will be marketed and promoted to deliver a rental yield for the owner well above normal levels of return.

Due to the enviable location of the development, it is envisaged that there will be sizeable capital growth on the value of Apartments once completed and combined with the rental income this investment presents a significant return on investment.

- Modern Studio Apartment
- Furnished Option for Investors
- Kitchenette
- Walk-in Showers
- Partial Sea or Garden Views
- WiFi Throughout
- Private Courtyard Parking
- Video Entry System

Telephone: +44 (0) 330 053 6919

Email: newhomes@remax.uk

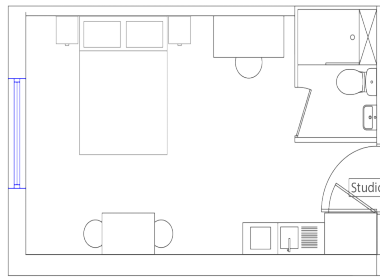
RE/MAX New Homes Deansgate 62-70 Tettenhall Road Wolverhampton WV1
4TH

RE/MAX
England & Wales
OVERSEAS

Additional Info

For Sale	Baths: 1	Type: Apartment
Part Sea View	Courtyard Parking	

FloorPlans



Telephone: +44 (0) 330 053 6919

Email: newhomes@remax.uk

RE/MAX New Homes Deansgate 62-70 Tettenhall Road Wolverhampton WV1
4TH

RE/MAX
England & Wales
OVERSEAS