

## 2 Bedroom Apartment

Cliff Pavilions, Harwich, Harwich

**£287,500**

Ref: uk.dig.1-015

Fully fitted, contemporary kitchens topped with Corian stone worktops and a choice of designs and colours mean you can put your own personality into the heart of the home. Built in appliances from one of Europe's foremost manufacturers are a standard feature, including an integrated oven, induction hob and large fridge freezer. The bathrooms are fitted with wall mounted ceramic hand basins with chrome mixer taps, and the main bathroom has both a pressed steel bath and bath/shower feature. En-suites have walk in showers that include both rain shower heads and a combined rinse shower. The stunning and spacious penthouses also feature underfloor heating throughout and fully controllable air-conditioning to the master bedroom and lounge areas• Panoramic Sea Views• Choice of Fitted Kitchens• Porce...

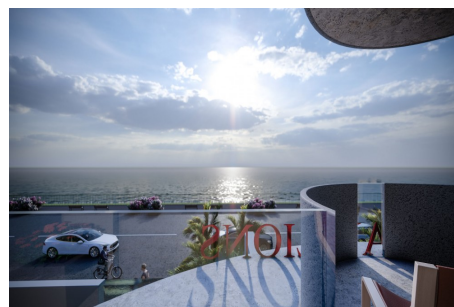
Telephone: +44 (0) 330 053 6919

Email: [newhomes@remax.uk](mailto:newhomes@remax.uk)

RE/MAX New Homes Deansgate 62-70 Tettenhall Road Wolverhampton WV1 4TH

**RE/MAX**  
England & Wales  
*OVERSEAS*

# Gallery



Telephone: +44 (0) 330 053 6919

Email: [newhomes@remax.uk](mailto:newhomes@remax.uk)

RE/MAX New Homes Deansgate 62-70 Tettenhall Road Wolverhampton WV1  
4TH

**RE/MAX**  
England & Wales  
*OVERSEAS*

# Property Description

**Location:** 22 Marine Parade, Dovercourt Bay, Harwich, Harwich, Essex

Fully fitted, contemporary kitchens topped with Corian stone worktops and a choice of designs and colours mean you can put your own personality into the heart of the home.

Built in appliances from one of Europe's foremost manufacturers are a standard feature, including an integrated oven, induction hob and large fridge freezer.

The bathrooms are fitted with wall mounted ceramic hand basins with chrome mixer taps, and the main bathroom has both a pressed steel bath and bath/shower feature.

En-suites have walk in showers that include both rain shower heads and a combined rinse shower. The stunning and spacious penthouses also feature underfloor heating throughout and fully controllable air-conditioning to the master bedroom and lounge areas

- Panoramic Sea Views
- Choice of Fitted Kitchens
- Porcelanosa Flooring
- Underfloor Heating (selected units)
- Air Conditioning (selected units)
- Gym & Fitness Centre
- Secure Underground Parking
- Video Entry System
- On-site Restaurant & Bar

---

Telephone: +44 (0) 330 053 6919

Email: [newhomes@remax.uk](mailto:newhomes@remax.uk)

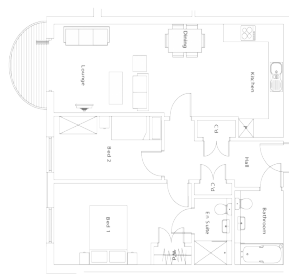
RE/MAX New Homes Deansgate 62-70 Tettenhall Road Wolverhampton WV1  
4TH

**RE/MAX**  
England & Wales  
*OVERSEAS*

# Additional Info

For Sale	Beds: 2	Baths: 1
Type: Apartment	Area: 75 sq m	Balcony
Sea view	1 Parking Space	

# FloorPlans



Telephone: +44 (0) 330 053 6919

Email: [newhomes@remax.uk](mailto:newhomes@remax.uk)

RE/MAX New Homes Deansgate 62-70 Tettenhall Road Wolverhampton WV1  
4TH

**RE/MAX**  
England & Wales  
*OVERSEAS*