



# Cliff Pavilions

Harwich, Harwich

£102,995

Ref: uk.clif.000

Welcome to Cliff Pavilions, considered to be one of Harwich's most iconic developments affording elegance and luxury to its residents. An exclusive complex of modern opulent apartments enjoying an enviable position overlooking Harwich's famous blue flag beaches. The prominent location naturally affords clear and uninterrupted views down the miles of golden sands that run along Harwich's famous coastline. The development pays homage to Dovercourt Bay's historic building, The Cliff Pavilion, that was built in 1932 overlooking the promenade of Dovercourt Bay. The Cliff Pavilion was a hub for local entertainment for nearly 40 years being finally demolished in the early 1970's. As such, it seemed a fitting tribute to name our new development after this iconic piece of local history. Situated...

Telephone: +44 (0) 330 053 6919

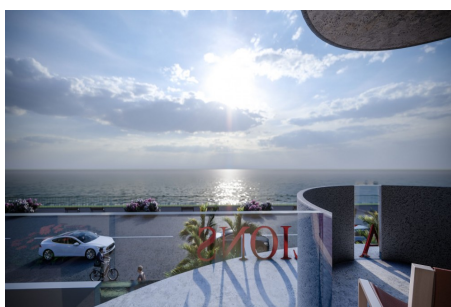
Email: [newhomes@remax.uk](mailto:newhomes@remax.uk)

RE/MAX New Homes Deansgate 62-70 Tettenhall Road Wolverhampton WV1  
4TH

**RE/MAX**  
England & Wales  
*OVERSEAS*



# Gallery



Telephone: +44 (0) 330 053 6919

Email: [newhomes@remax.uk](mailto:newhomes@remax.uk)

RE/MAX New Homes Deansgate 62-70 Tettenhall Road Wolverhampton WV1 4TH

**RE/MAX**  
England & Wales  
*OVERSEAS*

# Property Description

**Location:** 22 Marine Parade, Dovercourt Bay, Harwich, Harwich, Essex

Welcome to Cliff Pavilions, considered to be one of Harwich's most iconic developments affording elegance and luxury to its residents. An exclusive complex of modern opulent apartments enjoying an enviable position overlooking Harwich's famous blue flag beaches. The prominent location naturally affords clear and uninterrupted views down the miles of golden sands that run along Harwich's famous coastline.

The development pays homage to Dovercourt Bay's historic building, The Cliff Pavilion, that was built in 1932 overlooking the promenade of Dovercourt Bay. The Cliff Pavilion was a hub for local entertainment for nearly 40 years being finally demolished in the early 1970's. As such, it seemed a fitting tribute to name our new development after this iconic piece of local history.

Situated on the prestigious Marine Parade, this stunning art-deco structure consisting of spacious studio and one-bedroom Apartments and two-bedroom Residences will represent the pinnacle of luxury and style, providing an enviable address for its residents whilst celebrating the charm and opulence that was once the site of the renowned Cliff Hotel.

The 21 stylish and contemporary Residences have magnificent sea views with private balconies or terraces that command an enviable panorama of Harwich's celebrated blue flag beach below and the iridescent sea beyond, a view you would never get tired of. These stunning properties offer owners desirable beachfront living with all the luxurious amenities and services that such a unique development can deliver.

For investors, the studio and one-bedroom Apartments offer an investment opportunity rarely available. These units have the benefit of being fully managed and maintained and will be marketed and promoted to deliver a rental yield for the owner well above normal levels of return. Due to the enviable location of the development, it is envisaged that there will be sizeable capital growth on the value of Apartments once completed and combined with the rental income this investment presents a significant return on investment.