



## 2 Bedroom Apartment

Digbeth One 2, Birmingham, Birmingham

# £304,000

Ref: uk.dig.093

Located in the heart of a vibrant creative quarter and just a 10-minute walk from Birmingham city centre, Digbeth is a thriving new hotspot in Birmingham, home to a wide range of leisure spots and amenities. Conveniently linked to all of Birmingham's fantastic transport links with the Birmingham Coach Station only a 5-minute walk away. Only a mile from the famous Bullring Shopping Centre and Selfridges in the centre of Birmingham, Digbeth One 2 is just a short walk away from the sights and sounds of Britain's second city. Digbeth One 2 has an exterior that reflects Digbeth's industrial heritage, with accents inspired by the most dynamic boroughs in New York, with a unique style to reflect the building's industrial and urban aesthetic. A communal rooftop terrace with views over Birmingham for th...

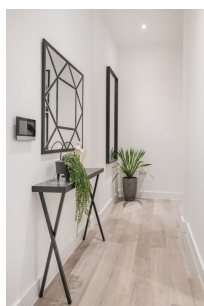
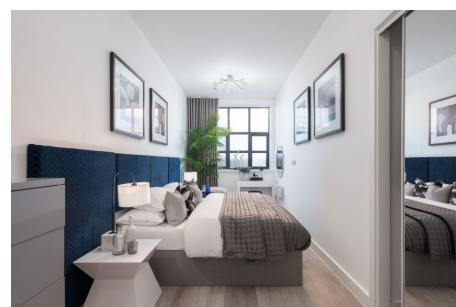
Telephone: +44 (0) 330 053 6919

Email: [newhomes@remax.uk](mailto:newhomes@remax.uk)

RE/MAX New Homes Deansgate 62-70 Tettenhall Road Wolverhampton WV1 4TH

**RE/MAX**  
England & Wales  
*OVERSEAS*

# Gallery



Telephone: +44 (0) 330 053 6919

Email: [newhomes@remax.uk](mailto:newhomes@remax.uk)

RE/MAX New Homes Deansgate 62-70 Tettenhall Road Wolverhampton WV1 4TH

**RE/MAX**  
England & Wales  
*OVERSEAS*



# Property Description

**Location:** Lombard Street, Birmingham, Birmingham, staffordshire

Located-in-the-heart-of-a-vibrant creative quarter and just-a-10-minute+walk from-Birmingham city centre.

Digbeth is a-thriving-new-hotspot-in-Birmingham, home-to a-wide-range-of-leisure spots-and amenities. Conveniently-linked-to-all-of-Birmingham's-fantastic transport-links-with-the-Birmingham-Coach Station only a-5-minute+ walk away.

Only a mile from the famous Bullring Shopping Centre and Selfridges in the centre-of Birmingham, Digbeth One 2 is just-a short walk away from the sights and sounds of-Britain's second city.

Digbeth One 2 has an exterior that reflects-Digbeth's industrial heritage, with accents-inspired by the most dynamic boroughs in New-York, with a unique style to reflect the buildings industrial and urban aesthetic.

A communal rooftop terrace with views over Birmingham-for the residents to enjoy.

Two-specially crafted interior design styles to choose from- Skandi & Mono, allowing-new homeowners to pick the style which defines them.

## Kitchens

- Premium finished worktops with stainless steel splashback
- Integrated appliances, including stainless steel oven, ceramic hob, fridge freezer and dishwasher
- Adjustable downlights

## Bathrooms

- Steel bath featuring chrome bath filter with overhead shower and hand held hose
- Built in mirrored shelving unit
- Wall hung toilet with soft close seat
- Semi-recessed basin with chrome single lever tap
- Fully tiled
- Electric towel radiators with chrome finished thermostat controller
- Chrome finished shaver socket
- Accessories including, soap holder toilet roll holder and robe hook finished in chrome

Telephone: +44 (0) 330 053 6919

Email: [newhomes@remax.uk](mailto:newhomes@remax.uk)

RE/MAX New Homes Deansgate 62-70 Tettenhall Road Wolverhampton WV1 4TH

**RE/MAX**  
England & Wales  
*OVERSEAS*

# Additional Info

For Sale	Beds: 2	Baths: 1
Type: Apartment	Area: 75 sq m	Third floor apartment
Communal courtyard access	Communal roof terrace access	Car parking space
1 secure cycle space		