



# Digbeth One 2

**Birmingham, Birmingham**

**£199,500**

**Ref: uk.dig.000**

Located in the heart of a vibrant creative quarter and just a 10 minute walk from Birmingham city centre, Digbeth One 2 is a new collection of apartments built for living, work and play. 194 contemporary apartments fronting Bradford Street, Lombard Street and Cheapside, in the heart of Digbeth. Influenced by the industrial heritage of the area, the development is in close proximity to some of the coolest cafés, independent shops, cinemas and arts venues in the country. Dusky red hued bricks and warehouse style anthracite windows are modern reminders of Digbeth's place in history. The internal courtyard with parking spaces and outdoor zones are there for all to enjoy, as is an spectacular communal rooftop.

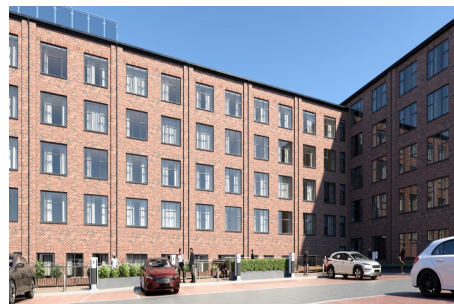
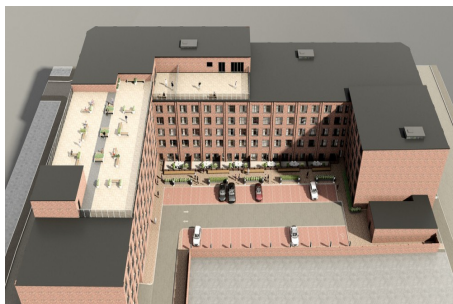
Telephone: +44 (0) 330 053 6919

Email: [newhomes@remax.uk](mailto:newhomes@remax.uk)

RE/MAX New Homes Deansgate 62-70 Tettenhall Road Wolverhampton WV1 4TH

**RE/MAX**  
England & Wales  
*OVERSEAS*

# Gallery



Telephone: +44 (0) 330 053 6919

Email: [newhomes@remax.uk](mailto:newhomes@remax.uk)

RE/MAX New Homes Deansgate 62-70 Tettenhall Road Wolverhampton WV1  
4TH

**RE/MAX**  
England & Wales  
*OVERSEAS*

# Property Description

**Location:** Lombard Street, Birmingham, Birmingham, staffordshire

**Located in the heart of a vibrant creative quarter and just a 10 minute walk from Birmingham city centre, Digbeth One 2 is a new collection of apartments built for living, work and play.**

194 contemporary apartments fronting Bradford Street, Lombard Street and Cheapside, in the heart of Digbeth.

Influenced by the industrial heritage of the area, the development is in close proximity to some of the coolest cafés, independent shops, cinemas and arts venues in the country.

Dusky red hued bricks and warehouse style anthracite windows are modern reminders of Digbeth's place in history. The internal courtyard with parking spaces and outdoor zones are there for all to enjoy, as is a spectacular communal rooftop.

---

Telephone: +44 (0) 330 053 6919

Email: [newhomes@remax.uk](mailto:newhomes@remax.uk)

RE/MAX New Homes Deansgate 62-70 Tettenhall Road Wolverhampton WV1  
4TH

**RE/MAX**  
England & Wales  
*OVERSEAS*

# Additional Info

For Sale	Beds: 1	Baths: 1
Type: New Development	Communal roof terrace access	Communal courtyard access
Car parking space	Secure cycle space	